

Emergency
Department

ED PMA

Practice Management Association



ANNUAL REVIEW 2010

THE EMERGENCY DEPARTMENT PRACTICE MANAGEMENT ASSOCIATION

EDPMA MISSION:

EDPMA advocates for emergency department physician groups and their practice partners to enhance quality patient care through operational excellence and financial stability. EDPMA is focused on advocating for beneficial policies for emergency physician groups and educating its members about emerging legislative and regulatory issues.

EDPMA is the national trade association representing Emergency Department Physician Groups, Emergency Department Billing Companies, and Supporting Organizations that make it their business to deliver quality care in the emergency department.

SUMMARY

The EDPMA Board of Directors, Task Forces and Committees oversee and carryout focused activities to achieve the organization's strategic objectives. The strategies to achieve the EDPMA mission, as determined by the Board, are advocacy, education, membership, and organizational vitality. The activities underlining each strategy are described in the following annual report.

EDPMA is committed to providing its members with enhanced membership value. EDPMA achieved this through strategic partnerships in its advocacy efforts and a number of technological initiatives. Collaborating with like-minded organizations has increased our effectiveness and provided EDPMA members more opportunities to grow their businesses.

EDPMA's flagship event, Solutions Summit XIII, was held in Key Biscayne, Florida from June 21-23, 2010. The Solutions Summit was branded with its own website and marketing materials to promote the conference to members and non-members alike. More than 200 health care professionals attended the Summit.

To create membership value throughout the year, EDPMA launched a webinar series in September 2010. The series, housed at www.edpma.org, features relevant industry topics and best practices providing members an additional outlet for continuing education and expanding their knowledge base.

ADVOCACY

To be an effective voice for emergency medicine physician groups and their partners, EDPMA strives to be a visible, influential, respected, and cooperative advocate for an efficient and fair legislative and regulatory environment. EDPMA's advocacy efforts strives to deliver high-quality and sustainable emergency department patient care.



EDPMA's lobbying efforts are led by Joyce Cowan, Esq., a partner in Morgan Lewis' FDA and Healthcare Practice.

EDPMA ADVOCACY SNAPSHOT:

- In April 2011, EDPMA launched a state legislative tracking system. This fully automated online system provides legislative alerts and update, information on current legislation, profiles of elected officials and much more. It is located in the members-only section of www.edpma.org
- EDPMA filed comments on SGR reform to the House Energy & Commerce Committee
- EDPMA and ACEP filed joint comments to CMS regarding Accountable Care Organizations
- EDPMA filed comments with CMS regarding EMTALA and hospitals with specialized capabilities
- EDPMA and the Healthcare Billing Management Association (HBMA) filed comments to CMS regarding PECOS
- EDPMA filed comments with CMS's Office of Consumer Information and Insurance Oversight regarding patient protections from the PPACA
- EDPMA and ACEP filed joint comments regarding CMS's proposed regulations on additional screening requirements, payment suspensions, and temporary enrollment moratoria in Medicare, Medicaid, and Children's Health Programs
- EDPMA filed comments on the 2011 Medicare Physician Fee Schedule
- EDPMA filed comments with the Texas Department of Insurance regarding network adequacy

KNOWLEDGE & LEARNING

EDPMA is committed to equipping its members with timely and pertinent knowledge, resources, and networking to support sustainable, quality patient care through operational excellence and financial stability. EDPMA fulfills this objective through the organization's annual conference, Solutions Summit, and by offering webinars on relevant industry topics and best practices.

SOLUTIONS SUMMIT XIII

The EDPMA Solutions Summit XIII was held at the Ritz Carlton in Key Biscayne, FL on June 21-23, 2010.

SOLUTIONS SUMMIT XIII ATTENDANCE-AT-A-GLANCE

- 210 total attendees
- 61% of attendees are senior level or C-Suite management

SOLUTIONS SUMMIT XIV

The EDPMA Solutions Summit XIV is being held at the Venetian, Las Vegas from May 15-18, 2011.

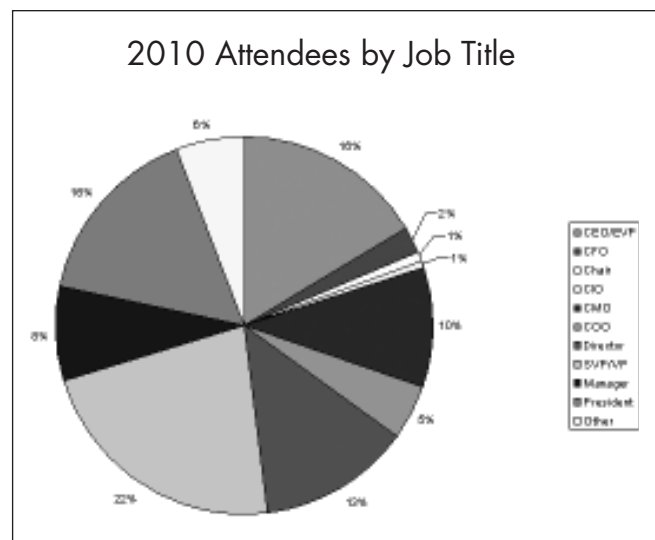
SOLUTIONS SUMMIT XV

The EDPMA Solutions Summit XV will be held at the Boston Park Plaza Hotel and Towers from May 20-22, 2012.

WEBINARS

EDPMA webinars are interactive seminars hosted by industry experts discussing industry hot topics, best practices, and special interests. The EDPMA webinar series launched in September, 2010 and provide continuing education to members throughout the year without burdening them with time away from the office or travel expenses. The following are webinars hosted by EDPMA, some of which are still available on-demand to EDPMA members:

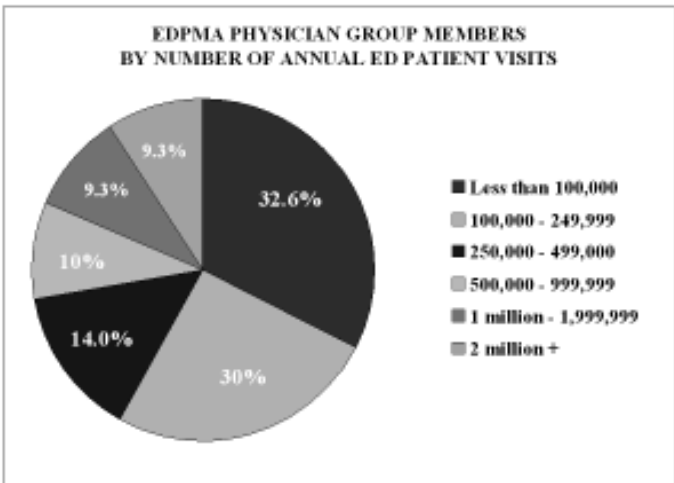
- The Next Frontier: Telemedicine in Emergency Medicine
- Bucking Conventional Wisdom: A Systems Approach for Managing Difficult to Treat Repeat Patients
- New Congress, New Year: What does it mean for you?



MEMBERSHIP

EDPMA recognizes its strength comes from a membership that is diverse and sizeable. EDPMA is committed to providing an extensive array of services to members that will address their needs. EDPMA is proud of the diversity of size in its physician group members, and over 68% of our physician group members have patient visits of 500,000 or less per year.

EDPMA is proud to provide efficiencies in membership services by streamlining website content to make it easier to find the information members need. In July 2010 EDPMA launched a redesigned website, which features an exclusive members-only area dedicated to delivering the latest in advocacy and health policy information.



ORGANIZATIONAL VITALITY

EDPMA establishes policies and procedures to ensure appropriate governance, strong leadership, financial stability, utilization of best association practices, and ethically sound practices for the purpose of ensuring a respected and balanced organization (volunteer leaders, task forces and finance).

EDPMA Task Forces are comprised of leading experts as well as those wishing to learn about, or get involved with, new issues. We encourage members to join Task Forces most relevant to their business and practice. To join an EDPMA Task Force, please contact info@edpma.org. All additions to Task Forces are subject to the approval of the company's designated main representative.

In 2009
EDPMA selected
Association
Management



Group, Inc., McLean, VA, as its management partner. AMG provides professional staffing, headquarters and infrastructure services to EDPMA and its members.

EDPMA STAFF

Linda T. Ayers, MHCM, CAE
Executive Director



Rebecca I. Fazzari, CMP
Senior Meetings Manager



Elizabeth L. Kovalak
Program Manager



EDPMA TASK FORCE & COMMITTEE CHAIRS 2010-2011

PROVIDER ENROLLMENT

Karen Collier, JD
epbs-Intermedix

Jackie Willett
Intermedix

DOCUMENTATION GUIDELINES

John Turner, MD, PhD, FACEP, Chair
Team Health

Mark Mitchell, D.O., FACOEP,
Co-Chair
Schumacher Group

HEALTH CARE REFORM

Beth Cesta, CPC, CHCC
Premier Health Care Services, Inc.

MEDICARE PAYMENT

Jeffrey Bettinger, MD, FACEP
BSA Healthcare

QUALITY INITIATIVES

Janie Schumaker, RN, MBA
T-System, Inc.

MANAGED CARE

Iva Thibodeaux
Schumacher Group

David Greenberg
TeamHealth

VISIBILITY AND COMMUNICATION COMMITTEE

Lynne Kottman
PracticeMax

MEMBERSHIP COMMITTEE

Nancy Dumas
Greater Houston Emergency Physicians

CONFERENCE PLANNING COMMITTEE

Ricardo Martinez, MD
Schumacher Group

EDUCATION COMMITTEE

Paul Hudson
ACUTE CARE, INC.

EDPMA BOARD OF DIRECTORS 2010-2011

Schumacher Group
Randy Pilgrim, MD, *Chair*

TeamHealth
Aron Goldfeld, JD, *Vice Chair*

EmCare, Inc.
Dighton Packard, MD, *Chair-elect*

epbs-Intermedix
Ken Goodin, *Treasurer*

ACUTE CARE, INC.
Paul Hudson

BSA HealthCare
Jeffrey Bettinger, MD

Comprehensive Medical Billing Solutions
Craig Deitch

Emergency Physicians Medical Group
Robert McCurren, MD

Emergency Service Partners
Cheryl Conner, RN

ERMed-Emergency Medicine Specialists
James Bradwell, MD

Greater Houston Emergency Physicians
Nancy Dumas

Jersey Emergency Medicine Specialists
Larry DesRochers, MD

Martin Gottlieb & Associates
Mike Drinkwater

Medical Management Professionals
Ed Gaines, JD

Midwest Emergency Associates Management
James Kolka, DO

PracticeMax
Lynne Kottman

Premier Health Care Services
Beth Cesta

Reimbursement Technologies, Inc.
Gregory Hufstetler

T-System, Inc.
Suzette (Wier) Thorby, RN

THE EDPMA BOARD OF DIRECTORS RETAINED
 ROGERS AND COMPANY, LLC TO CONDUCT
 ITS MOST RECENT AUDIT

Emergency Department Practice Management Association

Statements of Financial Position
 December 31, 2010 and 2009

	<u>2010</u>	<u>2009</u>
Assets		
Cash and cash equivalents	\$ 377,146	\$ 377,563
Accounts receivable	-	1,285
Prepaid expenses	<u>45,254</u>	<u>9,948</u>
Total assets	<u><u>\$ 422,400</u></u>	<u><u>\$ 388,796</u></u>
Liabilities and Net Assets		
Liabilities		
Accounts payable and accrued expenses	\$ 22,967	\$ 68,023
Deferred revenue	<u>105,195</u>	<u>91,557</u>
Total liabilities	<u>128,162</u>	<u>159,580</u>
Net Assets		
Unrestricted	290,988	229,216
Temporarily restricted	<u>3,250</u>	<u>-</u>
Total net assets	<u>294,238</u>	<u>229,216</u>
Total liabilities and net assets	<u><u>\$ 422,400</u></u>	<u><u>\$ 388,796</u></u>

Independent audit conducted by Rogers & Company

Emergency Department Practice Management Association

Statement of Activities
For the Year Ended December 31, 2010

	Unrestricted	Temporarily Restricted	Total
Revenue and Support			
Membership dues	\$ 362,625	\$ -	\$ 362,625
Conference	201,723	-	201,723
Contributions (Advocacy)	-	101,375	101,375
Royalties	5,289	-	5,289
Education	1,186	-	1,186
Interest income	49	-	49
Net assets released from restrictions	98,125	(98,125)	-
Total revenue and support	668,997	3,250	672,247
Expenses			
Program services:			
Conference	106,790	-	106,790
Advocacy	128,773	-	128,773
Membership	17,905	-	17,905
Education	1,964	-	1,964
Total program services	255,432	-	255,432
Supporting services:			
Management and general	351,793	-	351,793
Total expenses	607,225	-	607,225
Change in Net Assets	61,772	3,250	65,022
Net Assets, beginning of year	229,216	-	229,216
Net Assets, end of year	\$ 290,988	\$ 3,250	\$ 294,238